



quilting
treasures
IMAGINE & CREATE

Arabesque Quilt

SIZE 61" x 78"



Designed by Wendy Sheppard for Quilting Treasures



24644 A
(also backing)



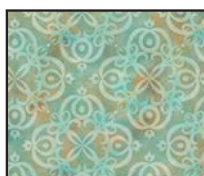
24645 A



24645 Q



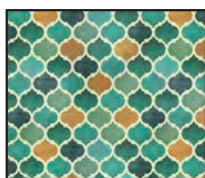
24646 E



24646 Q



24647 A



24647 Q



24648 Q
(includes binding)



24648 QZ



24648 X



22542 E

Designer Notes

- All seams are 1/4" throughout.

Cutting Directions

WOF—a widthwise cut from selvage to selvage; **HST**—half-square triangle; **QST**—quarter-square triangle

Note: Cut and subcut in order as given. Several subcuts are from the remains of previously cut strips.

FABRIC REQUIREMENTS

Design	Yardage
24644 A	7/8
24644 A*	4 7/8
24645 A	1 1/8
24645 Q	1/4
24646 E	1/3
24646 Q	7/8
24647 A	1/2
24647 Q	1/2
24648 Q**	3/4
24648 QZ	1 3/8
24648 X	1/4
22542 E	1 3/4
Quilt batting, 69" x 86"	
Basic sewing, pressing, and rotary-cutting supplies	
*backing only	
**includes binding	

24644 A: Fabric A (gold focal print)

Blocks

- Cut (3) 2 1/2" x **WOF** strips. Subcut (40) 2 1/2" squares.
- Cut (2) 2 7/8" x **WOF** strips. Subcut (16) 2 7/8" squares.
- Cut (2) 5 1/4" x **WOF** strips. Subcut (12) 5 1/4" squares. Cut each square once on both diagonals to yield a total of 48 QSTs. Reserve remaining fabric.
- From reserved fabric, subcut (2) 4 1/2" squares.

Backing

- Cut (2) 86" x **WOF** strips.

24645 A: Fabric B (brown dahlia print)

Blocks

- Cut (1) 2 1/2" x **WOF** strip. Subcut (8) 2 1/2" squares.
- Cut (1) 4 1/2" x **WOF** strip. Subcut (2) 4 1/2" squares. Reserve remaining fabric.
- From reserved fabric, cut (8) 2 7/8" squares.



Outer Border

- Cut (7) 4" x **WOF** strips. Sew strips together (end to end) with 45° seams. Subcut (2) 4" x 61" rectangles and (2) 4" x 71" rectangles.

24645 Q: Fabric C (blue dahlia print)

Blocks

- Cut (1) 5¼" x **WOF** strips. Subcut (4) 5¼" squares. Cut each square once on both diagonals to yield a total of 16 QSTs. Reserve remaining fabric.
- From reserved fabric, subcut (2) 4½" squares.

24646 E: Fabric D (gold geometric print)

Blocks

- Cut (2) 2½" x **WOF** strips. Subcut (24) 2½" squares.
- Cut (1) 2⅞" x **WOF** strip. Subcut (8) 2⅞" squares.

24646 Q: Fabric E (blue geometric print)

Blocks

- Cut (2) 2½" x **WOF** strips. Subcut (24) 2½" squares.
- Cut (1) 5¼" x **WOF** strip. Subcut (4) 5¼" squares. Cut each square once on both diagonals to yield a total of 16 QSTs. Reserve remaining fabric.
- From reserved fabric, subcut (2) 4½" squares.

Inner Border

- Cut (7) 2¼" x **WOF** strips. Sew strips together (end to end) with 45° seams. Subcut (2) 2¼" x 54" rectangles and (2) 2¼" x 67½" rectangles.

24647 A: Fabric F (brown mosaic print)

Blocks

- Cut (2) 2½" x **WOF** strips. Subcut (24) 2½" squares.
- Cut (1) 2⅞" x **WOF** strip. Subcut (8) 2⅞" squares.
- Cut (1) 4½" x **WOF** strip. Subcut (2) 4½" squares.

24647 Q: Fabric G (blue mosaic print)

Blocks

- Cut (2) 2½" x **WOF** strips. Subcut (24) 2½" squares.
- Cut (1) 2⅞" x **WOF** strip. Subcut (8) 2⅞" squares.
- Cut (1) 4½" x **WOF** strip. Subcut (2) 4½" squares.

24648 Q: Fabric H (dark blue tonal)

Sashing Row Keystone

- Cut (1) 1½" x **WOF** strip. Subcut (6) 1½" squares.

Binding

- Cut (8) 2½" x **WOF** strips.

24648 QZ: Fabric I (light blue tonal)

Blocks

- Cut (3) 2½" x **WOF** strips. Subcut (48) 2½" squares.
- Cut (3) 4½" x **WOF** strips. Subcut (48) 2½" x 4½" rectangles.
- Cut (2) 5¼" x **WOF** strips. Subcut (12) 5¼" squares. Cut each square once on both diagonals to yield a total of 48 QSTs.

Sashing Rows

- Cut (9) 1½" x **WOF** strips. Subcut (17) 1½" x 16½" rectangles.

24648 X: Fabric J (brown tonal)

Blocks

- Cut (1) 5¼" x **WOF** strip. Subcut (4) 5¼" squares. Cut each square once on both diagonals to yield a total of 16 QSTs.

22542 E: Fabric K (vanilla tonal)

Blocks

- Cut (3) 2½" x **WOF** strips. Subcut (48) 2½" squares.
- Cut (4) 2⅞" x **WOF** strips. Subcut (48) 2⅞" squares.
- Cut (6) 4½" x **WOF** strips. Subcut (96) 2½" x 4½" rectangles.
- Cut (2) 5¼" x **WOF** strips. Subcut (12) 5¼" squares. Cut each square once on both diagonals to yield a total of 48 QSTs.

Quilt Instructions

Note: Quilt has a total of twelve blocks. The blocks are made in six different fabric combinations: A/G, C/D, F/J, E/A, B/E, and A/A. Make two blocks of each fabric combination.

Block A/G

Block A/G – Unit 1

- 1a. *QST Units.* Referring to Diagram 1 and noting orientation of the pieces, sew one 5¼" Fabric K (vanilla tonal) QST to one 5¼" Fabric A (gold focal print) QST for Unit KA. Make a total of four Unit KA.

Diagram 1



- 1b. Referring to Diagram 2 and noting orientation of the pieces, sew one $5\frac{1}{4}$ " Fabric I (light blue tonal) QST to one $5\frac{1}{4}$ " Fabric A (gold focal print) QST for Unit IA. Make a total of four Unit IA.

Diagram 2



- 1c. Referring to Diagram 3, and noting orientation of the units, sew one Unit KA to one Unit IA for one QST Unit. QST Unit should measure $4\frac{1}{2}$ " square. Make a total of four QST Units.

Diagram 3



- 2a. *Flying Geese Units.* Referring to Diagram 4, draw a diagonal line on the wrong side of two $2\frac{1}{2}$ " Fabric G (blue mosaic print) squares. With right sides together, align one $2\frac{1}{2}$ " square to the left edge of one $2\frac{1}{2}$ " x $4\frac{1}{2}$ " Fabric I (light blue tonal) rectangle, noting the orientation of the drawn line. Sew on the drawn line. Open and press to reveal the right side of the Fabric G triangle. To reduce bulk, trim the hidden triangle underneath to $\frac{1}{4}$ " from sewn line.

Diagram 4



- 2b. Referring to Diagram 5 and with right sides together, align remaining $2\frac{1}{2}$ " Fabric G (blue mosaic print) square to the right edge of the same $2\frac{1}{2}$ " x $4\frac{1}{2}$ " Fabric I (light blue tonal) rectangle, noting the orientation of the drawn line. Sew on the drawn line. Open and press to reveal the right side of the Fabric G triangle. To reduce bulk, trim the hidden triangle underneath to $\frac{1}{4}$ " from sewn line. If needed, square up Flying Geese Unit to measure $2\frac{1}{2}$ " x $4\frac{1}{2}$ ". Make a total of four Flying Geese Units.

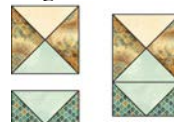
Diagram 5



3. *Assemble Unit 1.* Referring to Diagram 6 and noting orientation of the pieces, sew one QST Unit to one Flying Geese Unit for one Unit 1. Unit 1 should

measure $4\frac{1}{2}$ " x $6\frac{1}{2}$ ". Make a total of four Unit 1.

Diagram 6



Block A/G – Unit 2

4. *HST Units.* Referring to Diagram 7, draw a diagonal line on the wrong side of one $2\frac{7}{8}$ " Fabric K (vanilla tonal) square. With right sides together, align this Fabric K (vanilla tonal) square with one $2\frac{7}{8}$ " Fabric G (blue mosaic print) square. Sew $\frac{1}{4}$ " away from each side of the drawn line. Cut along drawn line to yield 2 HST units. HST Unit should measure $2\frac{1}{2}$ " square. From four pairs of Fabric KG squares, make a total of eight HST Units.

Diagram 7



- 5a. *Four-Patch Units.* Referring to Diagram 8 and noting orientation of the pieces, sew one $2\frac{1}{2}$ " Fabric I (light blue tonal) square to one HST Unit for Row 1. Row should measure $2\frac{1}{2}$ " x $4\frac{1}{2}$ ". Make a total of four Four-Patch Row 1.

Diagram 8



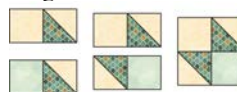
- 5b. Referring to Diagram 9 and noting orientation of the pieces, sew one $2\frac{1}{2}$ " Fabric K (vanilla tonal) square to one HST Unit for Row 2. Row should measure $2\frac{1}{2}$ " x $4\frac{1}{2}$ ". Make a total of four Four-Patch Row 2.

Diagram 9



- 5c. Referring to Diagram 10 and noting orientation of the rows, sew Row 1 and Row 2 together for one Four-Patch Unit. Four-Patch Unit should measure $4\frac{1}{2}$ " square. Make a total of four Four-Patch Units.

Diagram 10



- 6a. *Assemble Unit 2.* Referring to Diagram 11 and noting orientation of the pieces, sew one $2\frac{1}{2}$ " Fabric G (blue

mosaic print) to one $2\frac{1}{2}$ " x $4\frac{1}{2}$ " Fabric K (vanilla tonal) rectangle for Row 1. Row should measure $2\frac{1}{2}$ " x $6\frac{1}{2}$ ". Make a total of four Row 1.

Diagram 11



- 6b. Referring to Diagram 12 and noting orientation of the pieces, sew one $2\frac{1}{2}$ " x $4\frac{1}{2}$ " Fabric K (vanilla tonal) rectangle to one Four-Patch Unit for Row 2. Row should measure $6\frac{1}{2}$ " x $4\frac{1}{2}$ ". Make a total of four Row 2.

Diagram 12



- 6c. Referring to Diagram 13 and noting orientation of the rows, sew Row 1 and Row 2 together for one Unit 2. Unit should measure $6\frac{1}{2}$ " square. Make a total of four Unit 2.

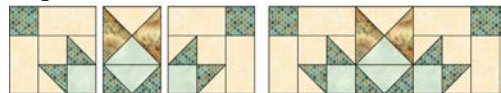
Diagram 13



Block A/G – Assembly

7. *Row 1.* Referring to Diagram 14 and noting orientation of the pieces, sew three units together in the following order: Unit 2, Unit 1, Unit 2 for Row 1. Row should measure $16\frac{1}{2}$ " x $6\frac{1}{2}$ ". Make a total of two Row 1.

Diagram 14



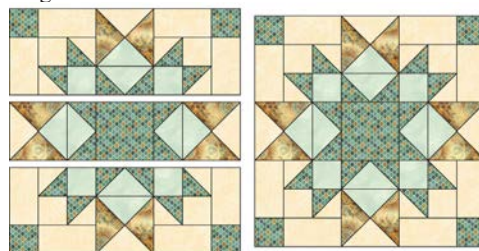
8. *Row 2.* Referring Diagram 15 and noting orientation of the pieces, sew three units together in the following order: Unit 1, one $4\frac{1}{2}$ " Fabric G (blue mosaic print) square, Unit 1 for Row 2. Row should measure $16\frac{1}{2}$ " x $4\frac{1}{2}$ ". Make a total of one Row 2.

Diagram 15



9. Referring to Diagram 16 and noting orientation of the rows, sew three rows together in the following order: Row 1, Row 2, Row 1 for Block A/G. Block A/G should measure $16\frac{1}{2}$ " square. Make a total of two Block A.

Diagram 16



Block C/D

Note: Follow construction steps 1–9 for Block C/D, using the fabric pieces stated below.

Block C/D – Unit 1



- 10a. *QST Units.* Repeat step 1a using one $5\frac{1}{4}$ " Fabric K (vanilla tonal) QST and one $5\frac{1}{4}$ " Fabric C (blue dahlia print) QST for Unit KC. Make a total of four Unit KC.
- 10b. Repeat step 1b using one $5\frac{1}{4}$ " Fabric I (light blue tonal) QST and one $5\frac{1}{4}$ " Fabric C (blue dahlia print) QST for Unit IC. Make a total of four Unit IC.
- 10c. Repeat step 1c using one Unit KC and one Unit IC for one QST Unit. Make a total of four QST Units.
- 11a. *Flying Geese Units.* Repeat step 2a using one $2\frac{1}{2}$ " Fabric D (gold geometric print) square and one $2\frac{1}{2}$ " x $4\frac{1}{2}$ " Fabric I (light blue tonal) rectangle.
- 11b. Repeat step 2b using one $2\frac{1}{2}$ " Fabric D (gold geometric print) square and the same $2\frac{1}{2}$ " x $4\frac{1}{2}$ " Fabric I (light blue tonal) rectangle. Make a total of four Flying Geese Units.
12. *Assemble Unit 1.* Repeat step 3. Make a total of four Unit 1.

Block C/D – Unit 2



13. *HST Units.* Repeat step 4 using one $2\frac{7}{8}$ " Fabric K



(vanilla tonal) square and one $2\frac{7}{8}$ " Fabric D (gold geometric print) square. From four KD pairs of $2\frac{7}{8}$ " squares, make a total of eight HST Units.

14a. *Four-Patch Units*. Repeat step 5a. Make a total of four Four-Patch Row 1.

14b. Repeat step 5b. Make a total of four Four-Patch Row 2.

14c. Repeat step 5c. Make a total of four Four-Patch Units.

15a. *Assemble Unit 2*. Repeat step 6a using one $2\frac{1}{2}$ " Fabric D (gold geometric print) square. Make a total of four Row 1.

15b. Repeat step 6b. Make a total of four Row 2.

15c. Repeat step 6c. Make a total of four Unit 2.

Block C/D – Assembly



16. Repeat step 7. Make a total of four Row 1.

17. Repeat step 8 using one $4\frac{1}{2}$ " Fabric C (blue dahlia print) square. Make a total of two Row 2.

18. Repeat step 9. Block C/D should measure $16\frac{1}{2}$ " square. Make a total of two Block C/D.

Block E/A

Note: Follow construction steps 1–9 for Block E/A, using the fabric pieces stated below.

Block E/A – Unit 1



19a. *QST Units*. Repeat step 1a using one $5\frac{1}{4}$ " Fabric K (vanilla tonal) QST and one $5\frac{1}{4}$ " Fabric A (gold focal print) QST for Unit KA. Make a total of four Unit KA.

19b. Repeat step 1b using one $5\frac{1}{4}$ " Fabric I (light blue tonal) QST and one $5\frac{1}{4}$ " Fabric A (gold focal print) QST for Unit IA. Make a total of four Unit IA.

19c. Repeat step 1c using one Unit KA and one Unit IA for one QST Unit. Make a total of four QST Units.

20a. *Flying Geese Units*. Repeat step 2a using one $2\frac{1}{2}$ " Fabric A (gold focal print) square and one $2\frac{1}{2}$ " x $4\frac{1}{2}$ " Fabric I (light blue tonal) rectangle.

20b. Repeat step 2b using one $2\frac{1}{2}$ " Fabric A (gold focal print) square and the same $2\frac{1}{2}$ " x $4\frac{1}{2}$ " Fabric I (light blue tonal) rectangle. Make a total of four Flying Geese Units.

21. *Assemble Unit 1*. Repeat step 3. Make a total of four Unit 1

Block E/A – Unit 2



22. *HST Units*. Repeat step 4 using one $2\frac{7}{8}$ " Fabric K (vanilla tonal) square and one $2\frac{7}{8}$ " Fabric A (gold focal print) square. From four KA pairs of $2\frac{7}{8}$ " squares, make a total of eight HST Units.

23a. *Four-Patch Units*. Repeat step 5a. Make a total of four Four-Patch Row 1.

23b. Repeat step 5b. Make a total of four Four-Patch Row 2.

23c. Repeat step 5c. Make a total of four Four-Patch Units.

24a. *Assemble Unit 2*. Repeat step 6a using one $2\frac{1}{2}$ " Fabric E (blue geometric print) square. Make a total of four Row 1.

24b. Repeat step 6b. Make a total of four Row 2.

24c. Repeat step 6c. Make a total of four Unit 2.

Block E/A – Assembly



25. Repeat step 7. Make a total of four Row 1.

26. Repeat step 8 using one $4\frac{1}{2}$ " Fabric E (blue geometric print) square. Make a total of two Row 2.

27. Repeat step 9. Block E/A should measure $16\frac{1}{2}$ " square. Make a total of two Block E/A.

Block F/J

Note: Follow construction steps 1–9 for Block F/J, using the fabric pieces stated below.

Block F/J – Unit 1



28a. *QST Units*. Repeat step 1a using one $5\frac{1}{4}$ " Fabric



- K (vanilla tonal) QST and one 5¼" Fabric J (brown tonal) QST for Unit KJ. Make a total of four Unit KJ.
- 28b. Repeat step 1b using one 5¼" Fabric I (light blue tonal) QST and one 5¼" Fabric J (brown tonal) QST for Unit IJ. Make a total of four Unit IJ.
- 28c. Repeat step 1c using one Unit KJ and one Unit IJ for one QST Unit. Make a total of four QST Units.
- 29a. *Flying Geese Units.* Repeat step 2a using one 2½" Fabric F (brown mosaic print) square and one 2½" x 4½" Fabric I (light blue tonal) rectangle.
- 29b. Repeat step 2b using one 2½" Fabric F (brown mosaic print) square and the same 2½" x 4½" Fabric I (light blue tonal) rectangle. Make a total of four Flying Geese Units.
30. *Assemble Unit 1.* Repeat step 3. Make a total of four Unit 1.

Block F/J – Unit 2



31. *HST Units.* Repeat step 4 using one 2⅞" Fabric K (vanilla tonal) square and one 2⅞" Fabric F (brown mosaic print) square. From four KF pairs of 2⅞" squares, make a total of eight HST Units.
- 32a. *Four-Patch Units.* Repeat step 5a. Make a total of four Four-Patch Row 1.
- 32b. Repeat step 5b. Make a total of four Four-Patch Row 2.
- 32c. Repeat step 5c. Make a total of four Four-Patch Units.
- 33a. *Assemble Unit 2.* Repeat step 6a using one 2½" Fabric F (brown mosaic print) square. Make a total of four Row 1.
- 33b. Repeat step 6b. Make a total of four Row 2.
- 33c. Repeat step 6c. Make a total of four Unit 2.

Block F/J – Assembly



34. Repeat step 7. Make a total of four Row 1.
35. Repeat step 8 using one 4½" Fabric F (brown mosaic print) square. Make a total of two Row 2.

36. Repeat step 9. Block F/J should measure 16½" square. Make a total of two Block F/J.

Block B/E

Note: Follow construction steps 1–9 for Block B/E, using the fabric pieces stated below.

Block B/E – Unit 1



- 37a. *QST Units.* Repeat step 1a using one 5¼" Fabric K (vanilla tonal) QST and one 5¼" Fabric E (blue geometric print) QST for Unit KE. Make a total of four Unit KE.
- 37b. Repeat step 1b using one 5¼" Fabric I (light blue tonal) QST and one 5¼" Fabric E (blue geometric print) QST for Unit IE. Make a total of four Unit IE.
- 37c. Repeat step 1c using one Unit KE and one Unit IE for one QST Unit. Make a total of four QST Units.
- 38a. *Flying Geese Units.* Repeat step 2a using one 2½" Fabric E (blue geometric print) square and one 2½" x 4½" Fabric I (light blue tonal) rectangle.
- 38b. Repeat step 2b using one 2½" Fabric E (blue geometric print) square and the same 2½" x 4½" Fabric I (light blue tonal) rectangle. Make a total of four Flying Geese Units.
39. *Assemble Unit 1.* Repeat step 3. Make a total of four Unit 1.

Block B/E – Unit 2



40. *HST Units.* Repeat step 4 using one 2⅞" Fabric K (vanilla tonal) square and one 2⅞" Fabric B (brown dahlia print) square. From four KB pairs of 2⅞" squares, make a total of eight HST Units.
- 41a. *Four-Patch Units.* Repeat step 5a. Make a total of four Four-Patch Row 1.
- 41b. Repeat step 5b. Make a total of four Four-Patch Row 2.
- 41c. Repeat step 5c. Make a total of four Four-Patch Units.
- 42a. *Assemble Unit 2.* Repeat step 6a using one 2½" Fabric B (brown dahlia print) square. Make a total of four Row 1.



42b. Repeat step 6b. Make a total of four Row 2.

42c. Repeat step 6c. Make a total of four Unit 2.

Block B/E – Assembly



43. Repeat step 7. Make a total of four Row 1.

44. Repeat step 8 using one 4½" Fabric B (brown dahlia print) square. Make a total of two Row 2.

45. Repeat step 9. Block B/E should measure 16½" square. Make a total of two Block B/E.

Block A/A

Note: Follow construction steps 1–9 for Block A/A, using the fabric pieces stated below.

Block A/A – Unit 1



46a. *QST Units.* Repeat step 1a using one 5¼" Fabric K (vanilla tonal) QST and one 5¼" Fabric A (gold focal print) QST for Unit KA. Make a total of four Unit KA.

46b. Repeat step 1b using one 5¼" Fabric I (light blue tonal) QST and one 5¼" Fabric A (gold focal print) QST for Unit IA. Make a total of four Unit IA.

46c. Repeat step 1c using one Unit KA and one Unit IA for one QST Unit. Make a total of four QST Units.

47a. *Flying Geese Units.* Repeat step 2a using one 2½" Fabric A (gold focal print) square and one 2½" x 4½" Fabric I (light blue tonal) rectangle.

47b. Repeat step 2b using one 2½" Fabric A (gold focal print) square and the same 2½" x 4½" Fabric I (light blue tonal) rectangle. Make a total of four Flying Geese Units.

48. *Assemble Unit 1.* Repeat step 3. Make a total of four Unit 1.

Block A/A – Unit 2



49. *HST Units.* Repeat step 4 using one 2⅞" Fabric K

(vanilla tonal) square and one 2⅞" Fabric A (gold focal print) square. From four KA pairs of 2⅞" squares, make a total of eight HST Units.

50a. *Four-Patch Units.* Repeat step 5a. Make a total of four Four-Patch Row 1.

50b. Repeat step 5b. Make a total of four Four-Patch Row 2.

50c. Repeat step 5c. Make a total of four Four-Patch Units.

51a. *Assemble Unit 2.* Repeat step 6a using one 2½" Fabric A (gold focal print) square. Make a total of four Row 1.

51b. Repeat step 6b. Make a total of four Row 2.

51c. Repeat step 6c. Make a total of four Unit 2.

Block A/A – Assembly



52. Repeat step 7. Make a total of four Row 1.

53. Repeat step 8 using one 4½" Fabric A (gold focal print) square. Make a total of two Row 2.

54. Repeat step 9. Block A/A should measure 16½" square. Make a total of two Block A/A.

Quilt Center Assembly

Note: Refer to the Quilt Layout Diagram for the following steps.

1. *Sashing Rows.* Sew five pieces together in the following order: one 1½" x 16½" Fabric I (light blue tonal) rectangle, one 1½" Fabric H (dark blue tonal) square, one 1½" x 16½" Fabric I (light blue tonal) rectangle, one 1½" Fabric H (dark blue tonal) square, one 1½" x 16½" Fabric I (light blue tonal) rectangle for one Sashing Row. Sashing Row should measure 1½" x 50½". Make a total of three Sashing Rows.

2. *Block Row 1.* Sew five pieces together in the following order: Block C/D, one 1½" x 16½" Fabric I (light blue tonal) rectangle, Block A/A, one 1½" x 16½" Fabric I (light blue tonal) rectangle, Block A/G for Block Row 1. Row should measure 16½" x 50½".



3. *Block Row 2.* Sew five pieces together in the following order: Block E/A, one 1½" x 16½" Fabric I (light blue tonal) rectangle, Block B/E, one 1½" x 16½" Fabric I (light blue tonal) rectangle, Block F/J for Block Row 2. Row should measure 16½" x 50½".

4. *Block Row 3.* Sew five pieces together in the following order: Block A/A, one 1½" x 16½" Fabric I (light blue tonal) rectangle, Block A/G, one 1½" x 16½" Fabric I (light blue tonal) rectangle, Block C/D for Block Row 3. Row should measure 16½" x 50½".

5. *Block Row 4.* Sew five pieces together in the following order: Block B/E, one 1½" x 16½" Fabric I (light blue tonal) rectangle, Block F/J, one 1½" x 16½" Fabric I (light blue tonal) rectangle, Block E/A for Block Row 4. Row should measure 16½" x 50½".

6. *Assemble Quilt Center.* Sew seven rows together in the following order: Block Row 1, Sashing Row, Block Row 2, Sashing Row, Block Row 3, Sashing Row, Block Row 4 for Quilt Center. Quilt Center should measure 50½" x 67½".

7. *Inner Border.* Sew one 2¼" x 67½" Fabric E (blue geometric print) rectangles to each long side of the Quilt Center. Sew one 2¼" x 54" Fabric E (blue geometric print) rectangle to each short side of the Quilt Center. Quilt Center should measure 54" x 71".

8. *Outer Border.* Sew one 4" x 71" Fabric B (brown dahlia print) rectangle to each long side of the Quilt Center. Sew one 4" x 61" Fabric B (brown dahlia print) rectangle to each short side of the Quilt Center. Quilt Top should measure 61" x 78".

Finishing

1. If not already done, prepare Fabric A (gold focal print) for the backing. Sew two strips together along the 86" selvage edge. Trim backing to measure 69" x 86".
2. Place the quilt top right side up on the top of the batting and the wrong side of the backing.
3. Baste the layers together and quilt as desired. Trim the backing and batting even with the quilt top.
4. Sew the eight 2½" x **WOF** Fabric H (dark blue tonal) strips together (end to end) using 45° seams to make a continuous strip. Fold strip in half lengthwise (with wrong sides together) and press. Bind as desired.

While all possible care has been taken to ensure the accuracy of this pattern, we are not responsible for printing errors or the way in which individual work varies.

Quilt Layout Diagram

