

QUILT SIZE 64½" X 76½"



Designed by: QT Fabrics



PATTERN CORRECTION FOR FLYING HIGH MULTIWINDOW QUILT

There is an error in this project. The panel blocks cannot be cut as directed in the pattern. The blocks will require coping strips added to be the correct size.

An additional $\frac{5}{8}$ yard of 30052 N (Airplane Toile) fabric or Navy blender/solid will be required.



CUTTING DIRECTION AMENDMENT

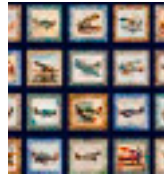
Fabric A (block print) 30051 X "Airplane Panel Block A

- Fussy cut (8) 8" squares, centering template square over each block motif.

Fabric A -1 (30052 N Navy Airplane Toile)

Block A Coping Strips

- Cut (9) 2" strips WOF. Subcut:
 - (16) 2" x 8" units
 - (16) 2" x 11" units



Proceed with cutting remaining fabrics per the original pattern.

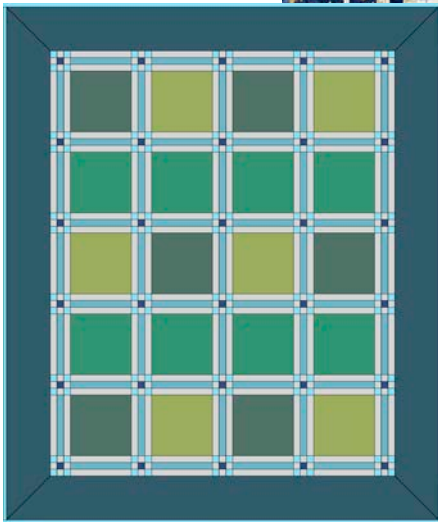
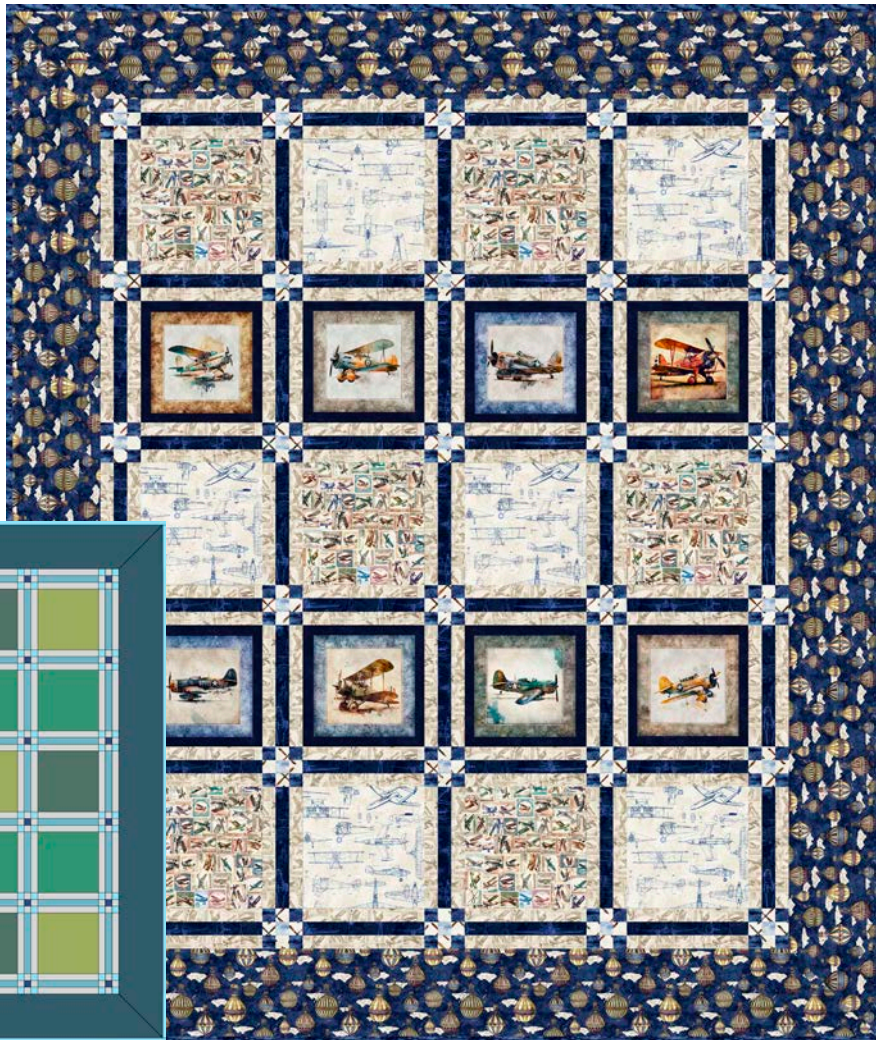
QUILT INSTRUCTIONS AMENDMENT

BEFORE creating Nine-Patch Blocks, add coping strips to the airplane blocks.

1. Sew a Fabric A-1 2" x 8" unit to both sides of an airplane block. Press seams toward the coping strip. Sew a Fabric A-1 2" x 11" strip to the top and bottom of the airplane blocks. Press seams toward the coping strip. This results in a generously sized unit. Square the completed unit to measure **9½"** square



Proceed with pattern instructions as written.



Finished Size: 64½" X 76½"

FABRIC REQUIREMENTS

	Fabric A 30048 E 36" Panel 1 YARD		Fabric B 30051 X ⅔ YARD		Fabric C 30052 E ⅔ YARD		Fabric D 30050 N 2⅜ YARDS
	Fabric E 30052 N ⅔ YARD		*Fabric F 30054 N 1 YARD		Fabric G 30051 E 1⅝ YARDS		Fabric H 30054 B ⅓ YARD
	**Fabric I 30049 E 4⅜ YARDS	* includes binding ** backing		Quilt batting, 73" x 85". Clear template plastic, 9½" x 9½". Basic rotary cutting, sewing, and pressing supplies.			

Designed by: QT Fabrics



We recommend that you carefully read through all instructions before starting your project.

CUTTING DIRECTIONS

Note:

All seams are $\frac{1}{4}$ " throughout.

WOF- Widthwise cut from selvage to selvage.

LOF- Lengthwise cut that is parallel to the selvage.

Fabric A (block print)

Block A

- Fussy cut (8) 8" squares, centering
- template square over each block motif.

Fabric B

Block B

- Cut (2) $9\frac{1}{2}$ " x $9\frac{1}{2}$ " strips. Sub cut (6) $9\frac{1}{2}$ " x $9\frac{1}{2}$ " squares.

Fabric C

Block C

- Cut (2) $9\frac{1}{2}$ " x **WOF** strips. Sub cut (6) $9\frac{1}{2}$ " x $9\frac{1}{2}$ " squares.

Fabric D

Border

- Fussy cut (4) 7" x **LOF** strips, centering the cut over the portion of the border stripe to be featured in the border. Trim two strips to measure 7" x 85" for each long (side) border. Trim two strips to measure 7" x 75" (for top and bottom borders).

Fabric E

Block Sashing

- Cut (13) $1\frac{1}{2}$ " x **WOF** strips.

Fabric F

Nine-Patch Blocks

- Cut (6) $1\frac{1}{2}$ " x **WOF** strips.

Binding

Cut (8) $2\frac{1}{2}$ " x **WOF** strips.

Fabric G

Nine-Patch Blocks

- Cut (7) $1\frac{1}{2}$ " x **WOF** strips.

Block Sashing

- Cut (26) $1\frac{1}{2}$ " x **WOF** strips.

Fabric H

Nine-Patch Blocks

- Cut (2) $1\frac{1}{2}$ " x **WOF** strips.

Backing

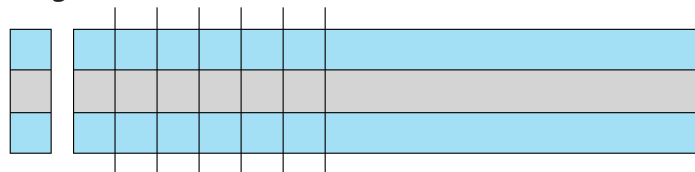
- Cut (2) 85" x **WOF** strips.

QUILT INSTRUCTIONS

Nine-Patch Blocks

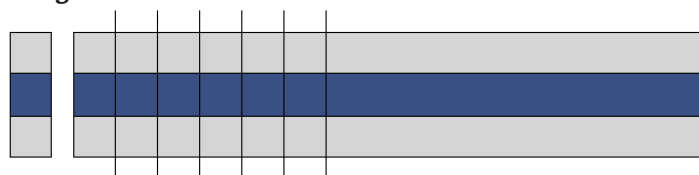
1. Referring to Diagram 1, sew one $1\frac{1}{2}$ " x **WOF** Fabric G strip between two $1\frac{1}{2}$ " x **WOF** Fabric F strips for one G/F Strip Set. Press seams in the same direction. Make a total of three G/F Strip Sets. Crosscut a total of (60) $1\frac{1}{2}$ " x $3\frac{1}{2}$ " G/F Units.

Diagram 1



2. Referring to Diagram 2, sew one $1\frac{1}{2}$ " x **WOF** Fabric H strip between two $1\frac{1}{2}$ " x **WOF** Fabric G strips for one H/G Strip Set. Press seams in the same direction. Make a total of two H/G Strip Sets. Crosscut a total of (30) $1\frac{1}{2}$ " x $3\frac{1}{2}$ " H/G Units.

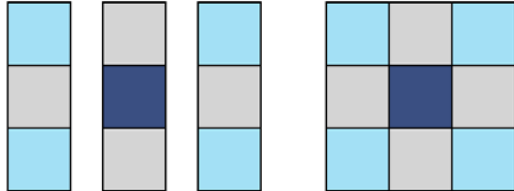
Diagram 2





3. Referring to Diagram 3 and noting orientation of the unit seams, sew one H/G Unit between two G/F Units for one Nine-Patch Block. Nine-Patch Block should measure 3½" square. Make a total of (30) Nine-Patch Blocks.

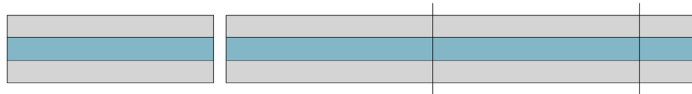
Diagram 3



Block Sashing

1. Referring to Diagram 4, sew one 1½" x **WOF** Fabric E strip between two 1½" x **WOF** Fabric G strips for one Block Sashing Strip Set. Press seams in the same direction. Make a total of (13) strip sets. Crosscut a total of (49) 9½" x 3½" Block Sashing Units.

Diagram 4



QUILT ASSEMBLY

Note: Refer to the Quilt Layout Diagram for the following steps.

1. Nine-Patch Rows. Sew five Nine-Patch Blocks and four Block Sashing Units together in the following order: Nine-Patch, Sashing Unit, Nine-Patch, Sashing Unit, Nine-Patch, Sashing Unit, Nine-Patch, Sashing Unit, Nine-Patch for one Nine-Patch Row. Row should measure 3½" x 51½". Make a total of six Nine-Patch Rows.

2. Block A Rows. Noting orientation of the blocks, sew four Block A and five Block Sashing Units together in the following order: Sashing Unit, Block A, Sashing Unit, Block A, Sashing Unit, Block A, Sashing Unit, Block A, Sashing Unit for Block A Rows. Row should measure 9½" x 51½". Make a total of two Block A Rows.

3. Block B/C Rows. Noting orientation of the blocks, sew two Block B, two Block C and five Block Sashing Units together in the following order: Sashing Unit, Block B, Sashing Unit, Block C, Sashing Unit, Block B, Sashing Unit, Block C, Sashing Unit for Block B Rows. Row should measure 9½" x 51½". Make a total of three Block B/C Rows.

4. Assemble Quilt Center. Noting orientation of the rows, sew the eleven rows together in the following order: Nine-Patch Row, Block B/C Row, Nine-Patch Row, Block Row A, Nine-Patch Row, Block B/C Row, Nine-Patch Row, Block Row A, Nine-Patch Row, Block B/C Row, Nine-Patch Row for the Quilt Center. Quilt Center should measure 51½" x 63½".

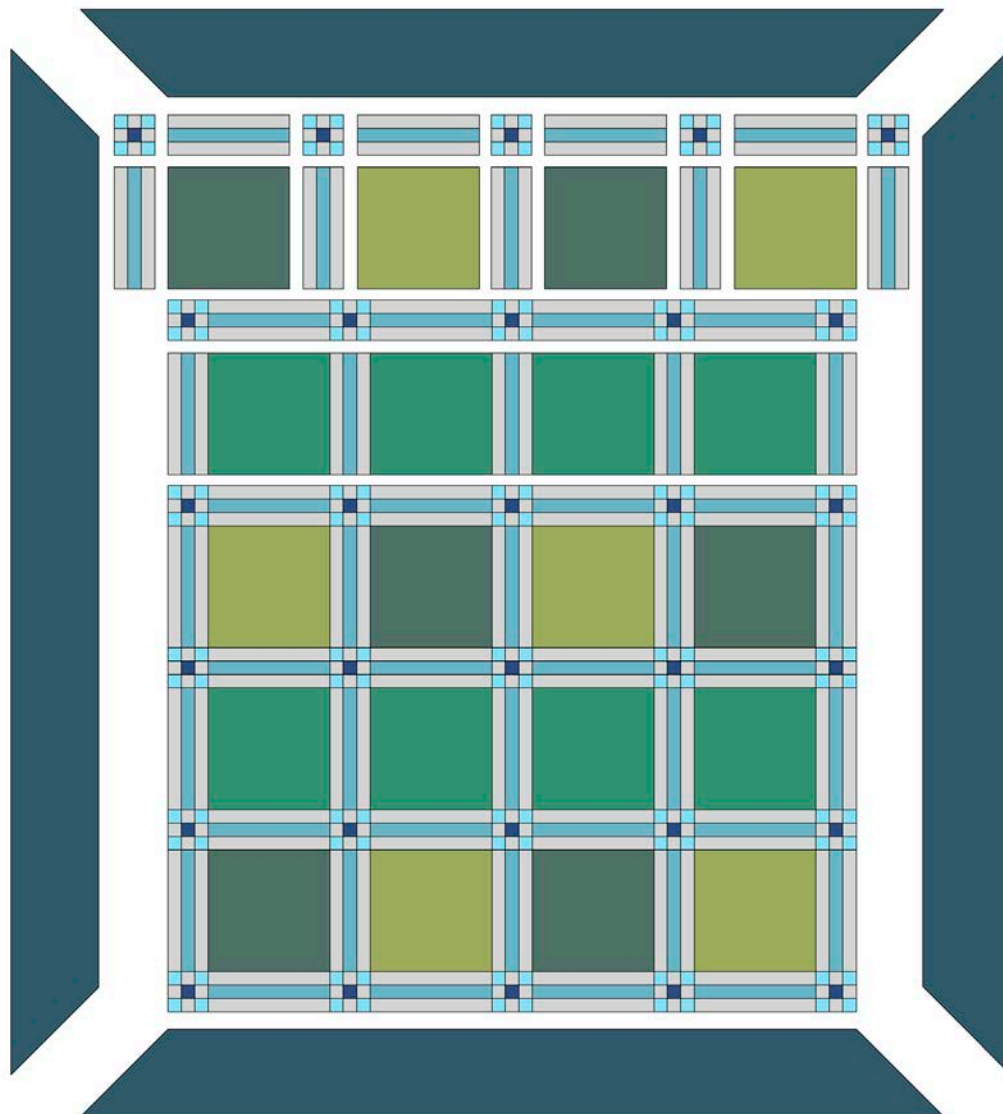
5. Mitered Outer Border. Beginning and ending ¼" from the Quilt Center (back stitch to secure seam), center and sew one 7" x 85" Fabric D rectangle to each long side of the Quilt Center. Beginning and ending ¼" from the Quilt Center (back stitch to secure seam), center and sew one 7" x 75" Fabric D rectangle to each short side of the Quilt Center. Miter border corners. Trim each mitered corner seam to ½" and press seam open. Quilt Top should measure 64½" x 76½".



FINISHING

1. Sew the two Fabric I strips together along the 85" length for the backing. Trim backing to measure approximately 73" x 85".
2. Place the quilt top right side up on the top of the batting and the wrong side of the backing fabric.
3. Baste the layers together and quilt as desired. Trim the backing and batting even with the quilt top.
4. Sew the eight 2½" x **WOF** Fabric F strips together (end to end) using diagonal seams to make a continuous strip. Fold strip in half lengthwise (with wrong sides together) and press. Bind as desired.

Quilt Layout Diagram



While all possible care has been taken to ensure the accuracy of this pattern, we are not responsible for printing errors or the way in which individual work varies.