

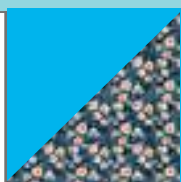
APPROXIMATE SIZE 9¾" x 11" x 3"



FABRIC REQUIREMENTS



Fabric A
31446 K
¼ YARD*



Fabric B
31447 W
1 YARD**

- * Outer Tote
- ** Handles, Base, and Lining

OTHER MATERIALS

- 1 yard iron-on interfacing
- 2¼" x 10½" piece of cardboard

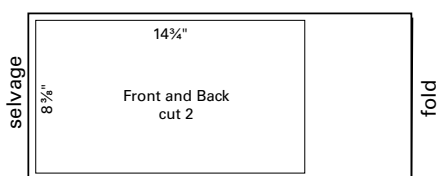
We recommend that you carefully read through all instructions before starting your project.

CUTTING DIRECTIONS

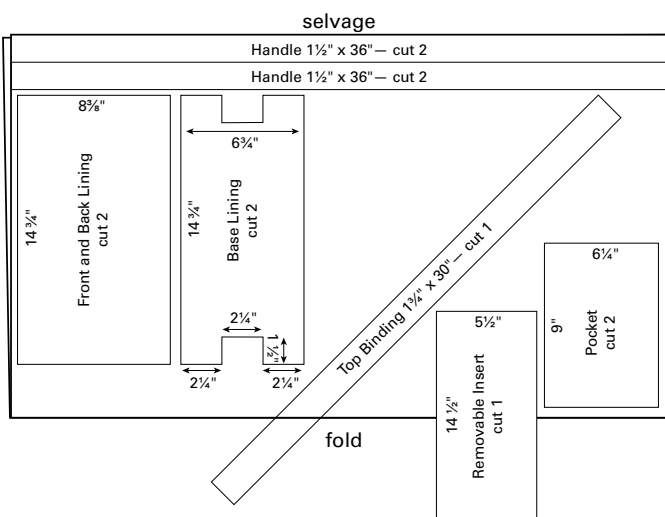
$\frac{3}{8}$ " seam allowance used in all piecing unless otherwise noted. RS equals right side of fabric. WS equals wrong side of fabric.

Refer to the Layout drawings below to draw and cut all pieces.

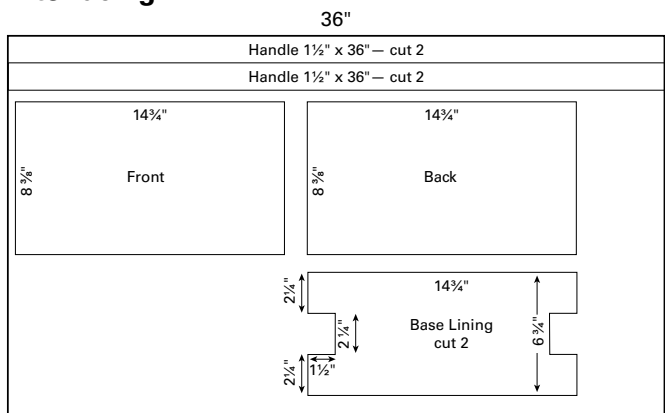
Outer Tote:



Handles, Base, and Lining:



Interfacing:



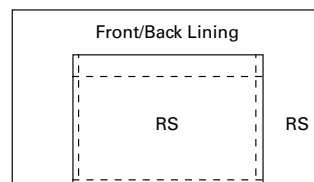
PREPARATION

1. Apply interfacing to the wrong side of the front, back and handle pieces referring to the manufacturer's instructions.

CONSTRUCTION

Inside Pocket

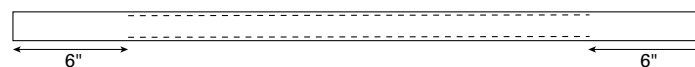
- 1.** Press under $\frac{1}{4}$ " on upper edge of pocket; press under again to form a 1" hem and topstitch.
- 2.** Press under each short end of the hemmed pocket.
- 3.** Center pocket onto the right side of one lining piece, aligning the unhemmed bottom edge with the bottom edge of the lining. Topstitch short ends and baste bottom edge in place.



Handles

1. With right sides together, sew long edges of handles using a $\frac{1}{4}$ " seam allowance. Turn right side out; press.

2. Topstitch $\frac{1}{8}$ " from each edge starting and ending 6" from each end.

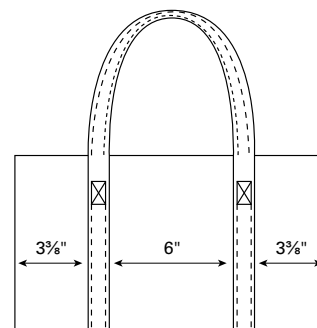


3. Place a handle strip on the right side of the bag front referring to the drawing for exact placement.

4. Topstitch handles in place on both edges 6" up from the bottom edge to meet the previous topstitching, leaving $1\frac{1}{2}$ " to the top edge loose.

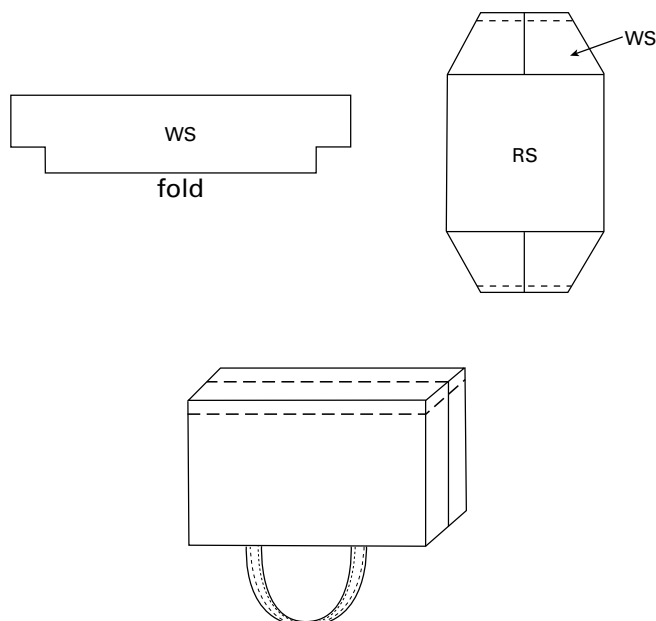
5. Reinforce the end stitching with an X pattern.

6. Repeat steps 3–5 with the second prepared handle strip and the back tote piece.



Bag Assembly

1. With right sides together, sew the front and back lining pieces together along the side seams; press seams open. Repeat with the interfaced front and back pieces.
2. Fold one base piece in half along length with right sides together; press to mark the folded edge. Sew side seams.
3. Turn the base piece right side out and fold stitched side seams to align seams with the pressed center fold line; press.
4. Repeat with the second base piece.
5. With right sides together and matching side seams, sew one base piece to the bottom edge of the stitched front/back/handle unit to complete the outer tote shell; press seam upward. Turn right side out.
6. Repeat step 5 with the remaining base piece and the front/back lining unit except do not turn right side out.
7. Place the lining inside of the tote shell with wrong sides together, matching side seams; machine-baste top edges together.



Enclosing Top Edge

1. Press under $\frac{1}{4}$ " along one long edge and one short end of the binding strip.
2. Starting with the folded short end at one side seam and with right sides together, sew the raw edge of the binding strip to the top raw edge of the basted tote.
3. Overlap ends 1", trim excess and fold and press the unstitched end to the wrong side and complete stitching.
4. Wrap the binding over the top raw edge to the inside of the tote, folding along the center of the strip; press.
5. Topstitch through all layers, checking to be sure that the stitching is catching the binding on the back side as you stitch.
6. Press the top edge.

Removable Insert

1. With right sides together, fold along the long edge of the removable insert piece. Stitch across one end and along the long edge.
2. Turn right side out; press.
3. Cut the cardboard to fit and slip inside through the open end.
4. Fold the open end to the inside; hand- or machine-stitch to close the opening.
5. Place the insert inside at the bottom of the tote to finish.

While all possible care has been taken to ensure the accuracy of this pattern, we are not responsible for printing errors or the way in which individual work varies.