



Approximate Quilt Size: 63" x 69"

Designed by: Desiree Habicht of Desiree's Designs



23618 X



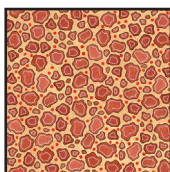
23619 Z



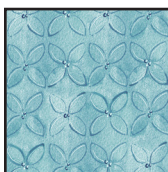
23620 A



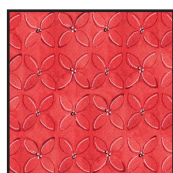
23620 E



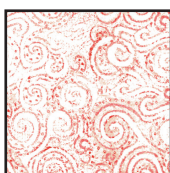
23621 E



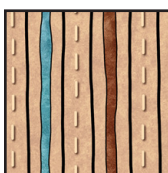
23622 B



23622 R



23623 R



23624 E

FABRIC REQUIREMENTS

Design	Yards
23618 X	1 (24") Panel
23619 Z	$\frac{5}{8}$
23620 A	$\frac{5}{8}$
23620 E	$\frac{3}{4}$
23621 E	$\frac{1}{2}$
23622 B	$\frac{7}{8}$
23622 R (Inc. Binding)	$1\frac{2}{3}$
23623 R	$\frac{1}{2}$
23624 E	$\frac{1}{3}$
Backing Of Choice	4

Optional supplies: $1\frac{1}{2}$ yards paper backed fusible web (20" wide) if using fusible applique method.

Cutting

Note: All strips are cut across the width unless noted otherwise.

A. 23618-X (panel)

- Cut panel $22\frac{1}{2}$ " x $42\frac{1}{2}$ " centering design.

B. 23619-Z (white animal print)

- Cut one $16\frac{1}{2}$ " strip; subcut four $9\frac{1}{2}$ " x $16\frac{1}{2}$ " rectangles.

C. 23620-A (brown tonal animal print)

- Cut six $2\frac{1}{2}$ " strips. Sew together end to end with diagonal seams; press. Cut two $2\frac{1}{2}$ " x $58\frac{1}{2}$ " strips and two $2\frac{1}{2}$ " x $60\frac{1}{2}$ " strips.

D. 23620-E (tan tonal animal print)

- Cut three $7\frac{1}{2}$ " strips. Sew together end to end with diagonal seams; press. Cut two $7\frac{1}{2}$ " x $54\frac{1}{2}$ " strips.

E. 23621-E (giraffe print)

- Cut six $2\frac{1}{2}$ " strips; subcut twelve $2\frac{1}{2}$ " x $16\frac{1}{2}$ " strips.

F. 23622-B (blue tonal flower print)

- Cut three $4\frac{1}{2}$ " strips; subcut twenty-four $4\frac{1}{2}$ " squares. For optional applique: Prepare elephant template. Trace and cut five applique motifs using your preferred applique method.

G. 23622-R (red tonal flower print)

- Cut seven 3" strips. Sew together end to end with diagonal seams; press.
- Cut two 3" x $63\frac{1}{2}$ " strips and two 3" x $64\frac{1}{2}$ " strips.
- Cut seven $2\frac{1}{2}$ " strips for binding.
- For optional applique: Prepare giraffe template. Trace and cut five applique motifs using your preferred applique method.

H. 23623-R (white/red swirl print)

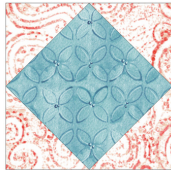
- Cut six $2\frac{1}{2}$ " strips; subcut ninety-six $2\frac{1}{2}$ " squares.

I. 23624-E (stripe)

- Cut three $2\frac{1}{2}$ " strips. Sew together end to end; press. Cut two $2\frac{1}{2}$ " x $54\frac{1}{2}$ " strips.

Construction

1. Draw a diagonal line on the back side of each Fabric H square. Place one square right sides together in a corner of one Fabric F square. Sew on the line. Trim seam allowance to 1/4". Repeat for remaining corners to complete one square-in-a-square unit. Press toward the triangles. Repeat to make (24) units.



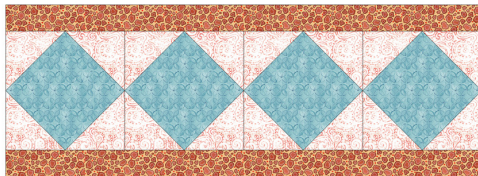
Make 24.

2. Sew four units from step 1 together into a row; press. Repeat to make six rows.



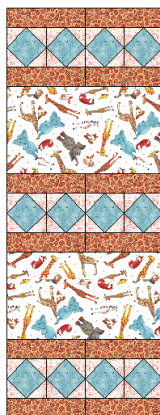
Make 6.

3. Sew one Fabric E strip to the top and bottom of each row made in step 2. Press toward the strips.



Make 6.

4. Sew three units from step 3 alternately together with two Fabric B rectangles. Press toward the rectangles. Repeat to make two side sections.



Make 2.

5. Sew a side section to both sides of the Fabric A panel. Press toward the panel.



6. Sew one Fabric D strip together with one Fabric I strip. Press toward the tan strip. Repeat to make two sets. If using applique, it may be easier to add that to the strip sets at this stage using your preferred method.



Make 2.

7. Sew strip sets from step 6 to the top and bottom of panel unit. Press toward the strip sets.



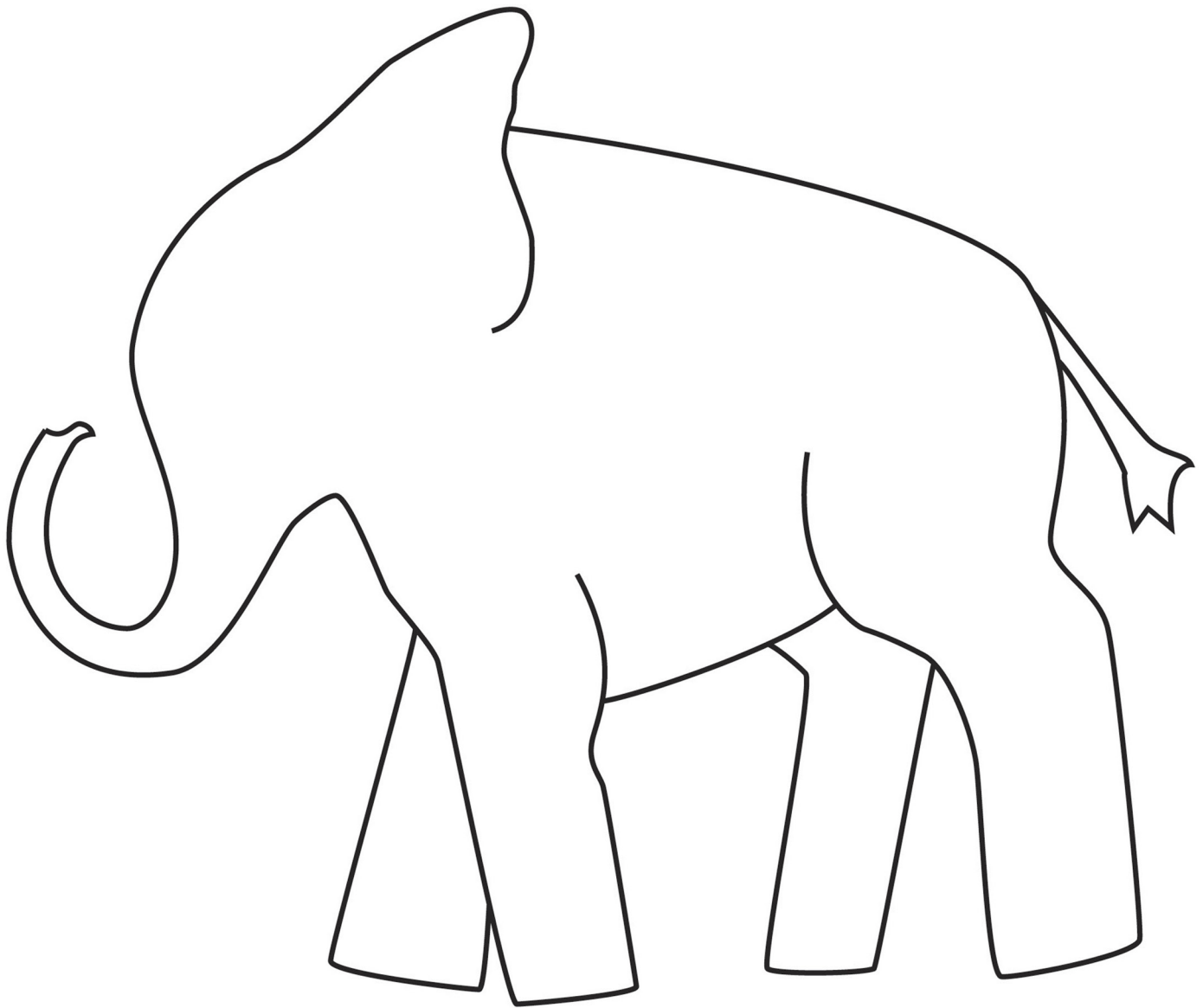
8. Sew one Fabric C 2 1/2" x 60 1/2" strip to the sides of the quilt. Sew one Fabric C 2 1/2" x 58 1/2" to the top and bottom of the quilt. Press all seams toward the borders.
9. Sew one Fabric G 3" x 64 1/2" strip to the sides of the quilt. Sew one Fabric G 3" x 63 1/2" strip to the top and bottom of the quilt. Press all seams toward the borders.

Finishing

1. Layer quilt top, batting and prepared backing. Quilt as desired.
2. Trim layers even with quilt top.
3. Prepare binding using Fabric G 2 1/2" strips. Sew to quilt using your preferred method.

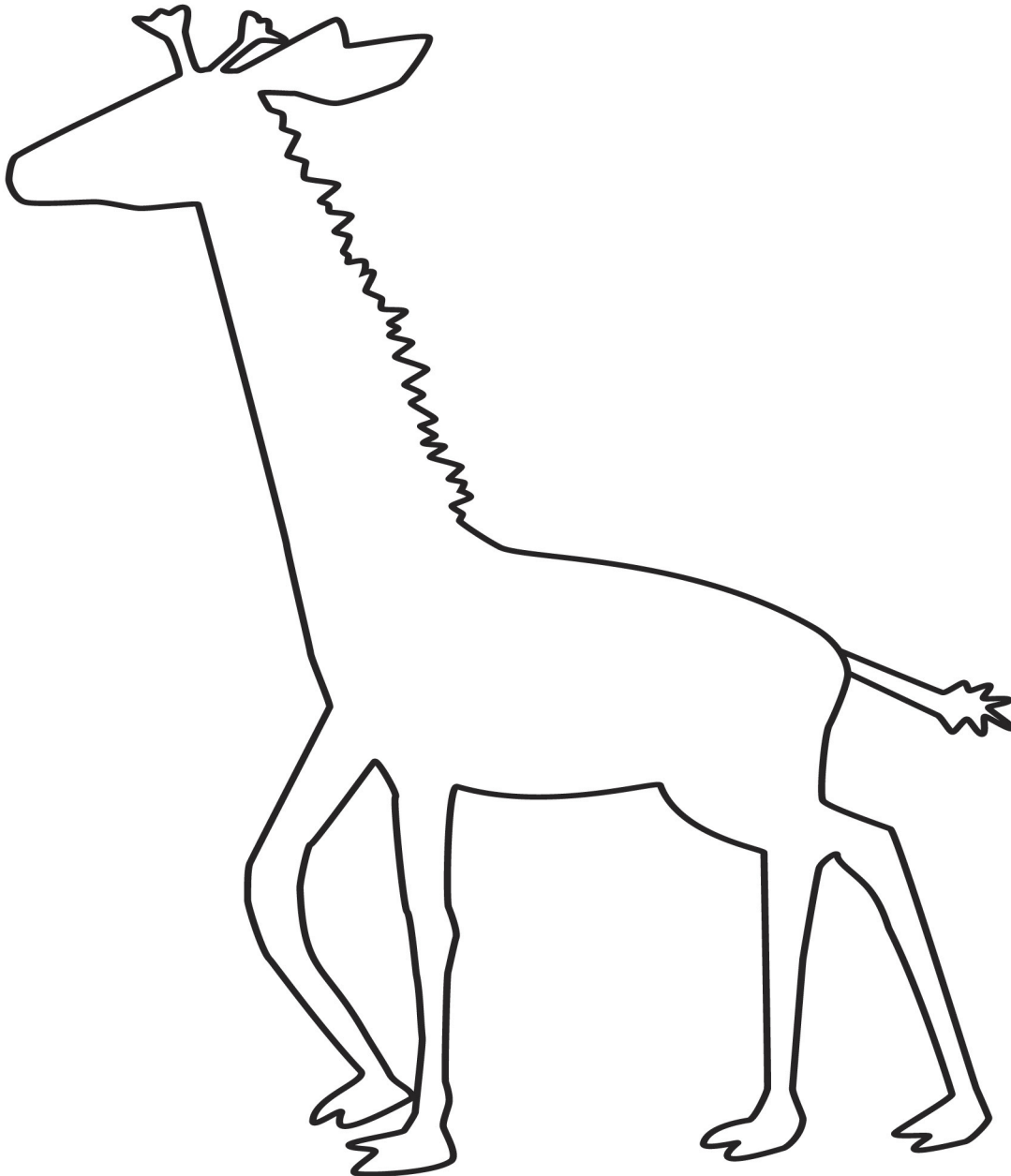
Scale Ratio Image

1"



Scale Ratio Image

1"



While all possible care has been taken to ensure the accuracy of this pattern, we are not responsible for printing errors or the way in which individual work varies.